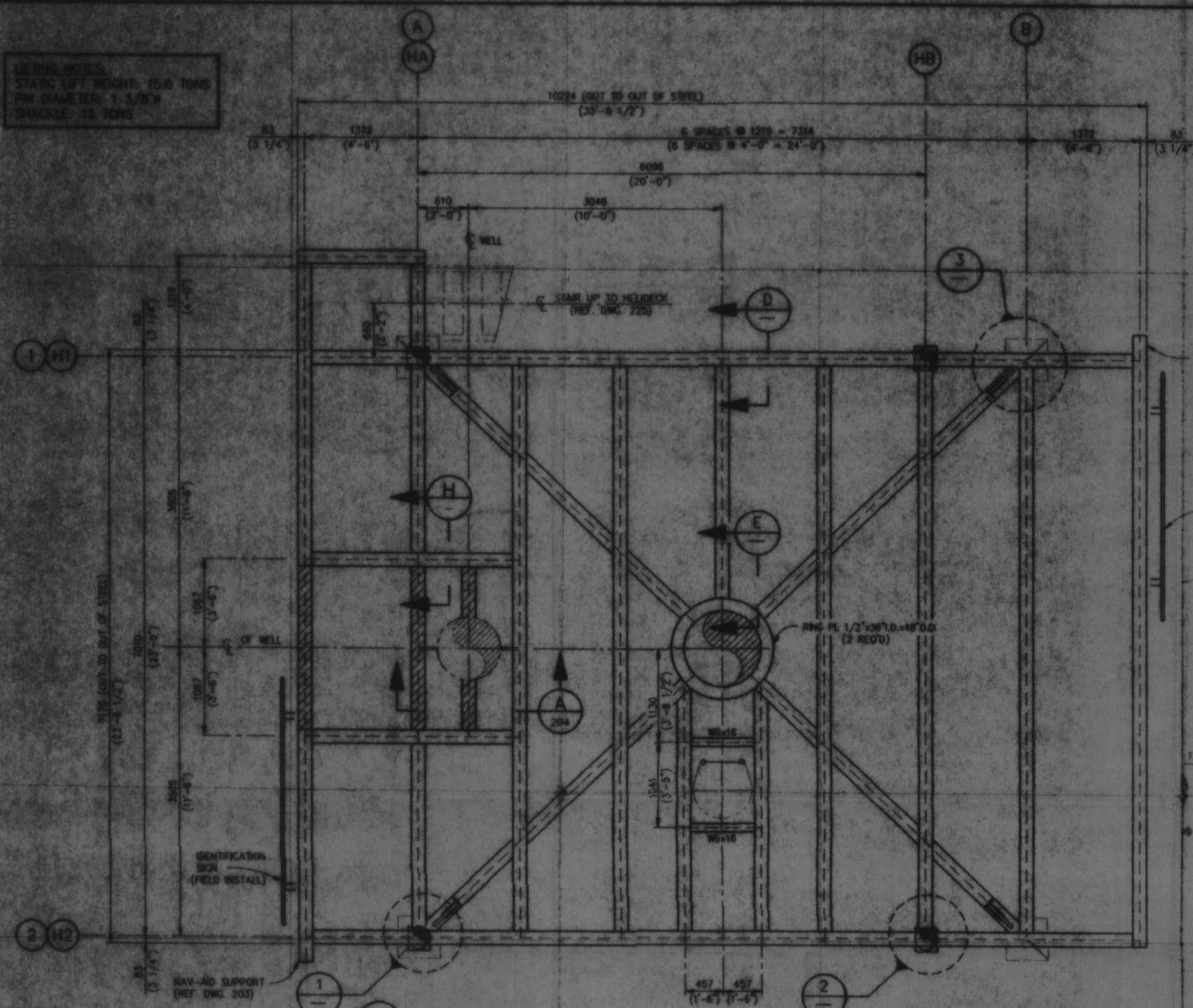
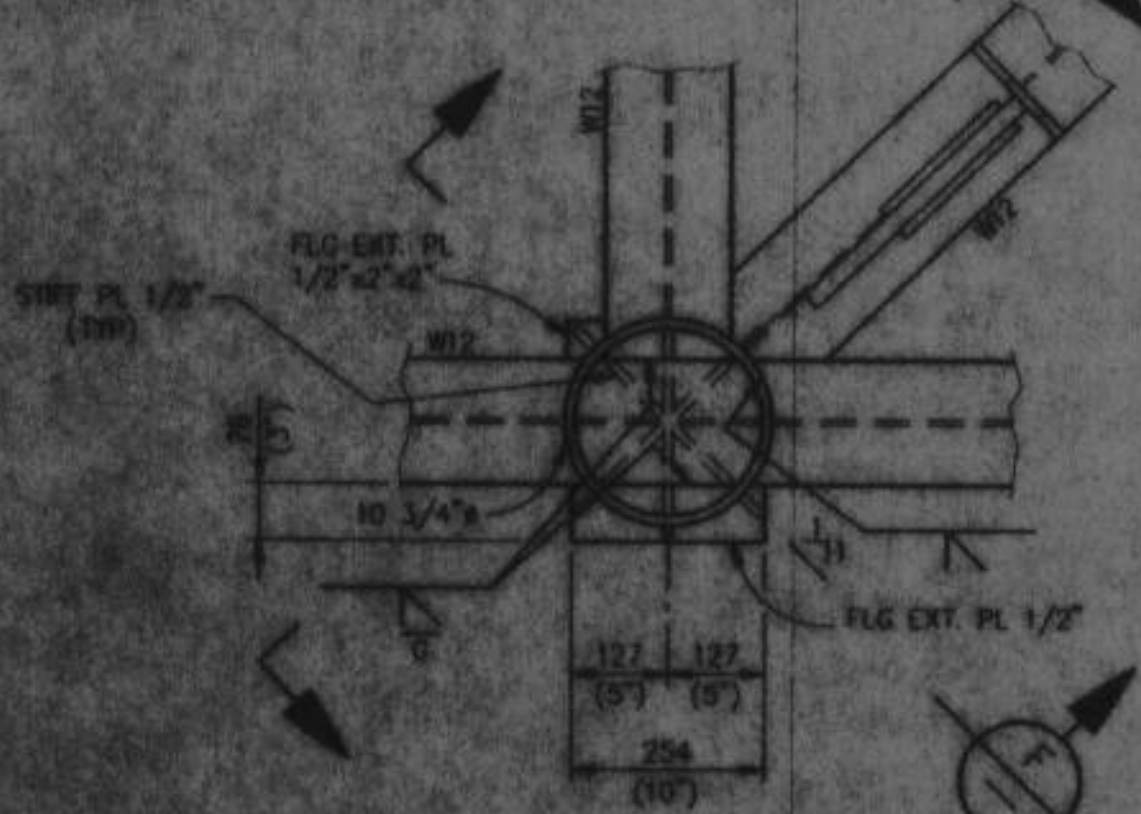


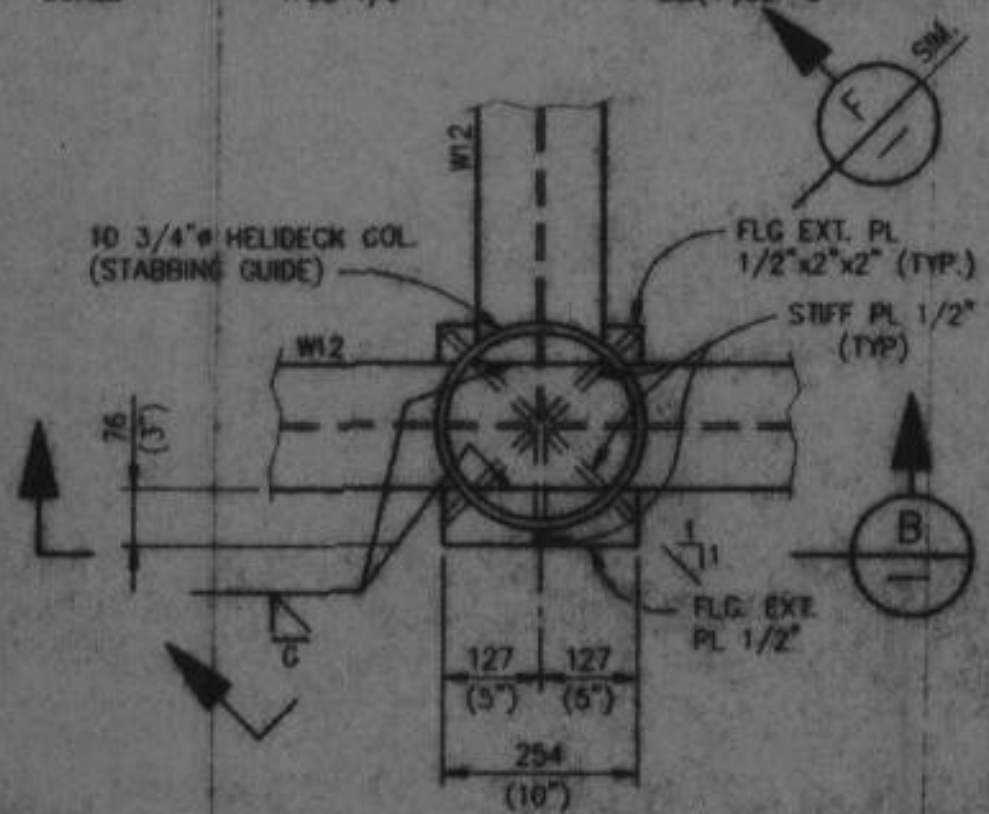
NOTES:
 1. STAINLESS STEEL: 15.0 TONS
 PIN DIAMETER: 1 3/8"
 SHACKLE: 15 TONS



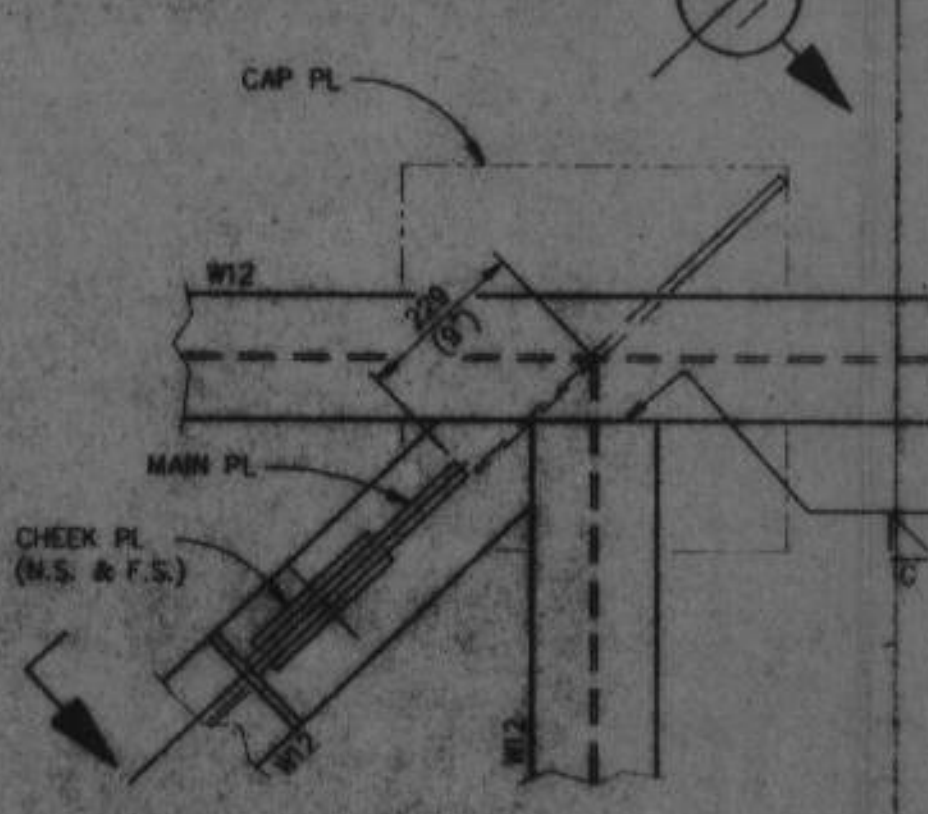
FRAMING PLAN @ T.O.S. EL. (+15850)
 SCALE: 1:33 1/3



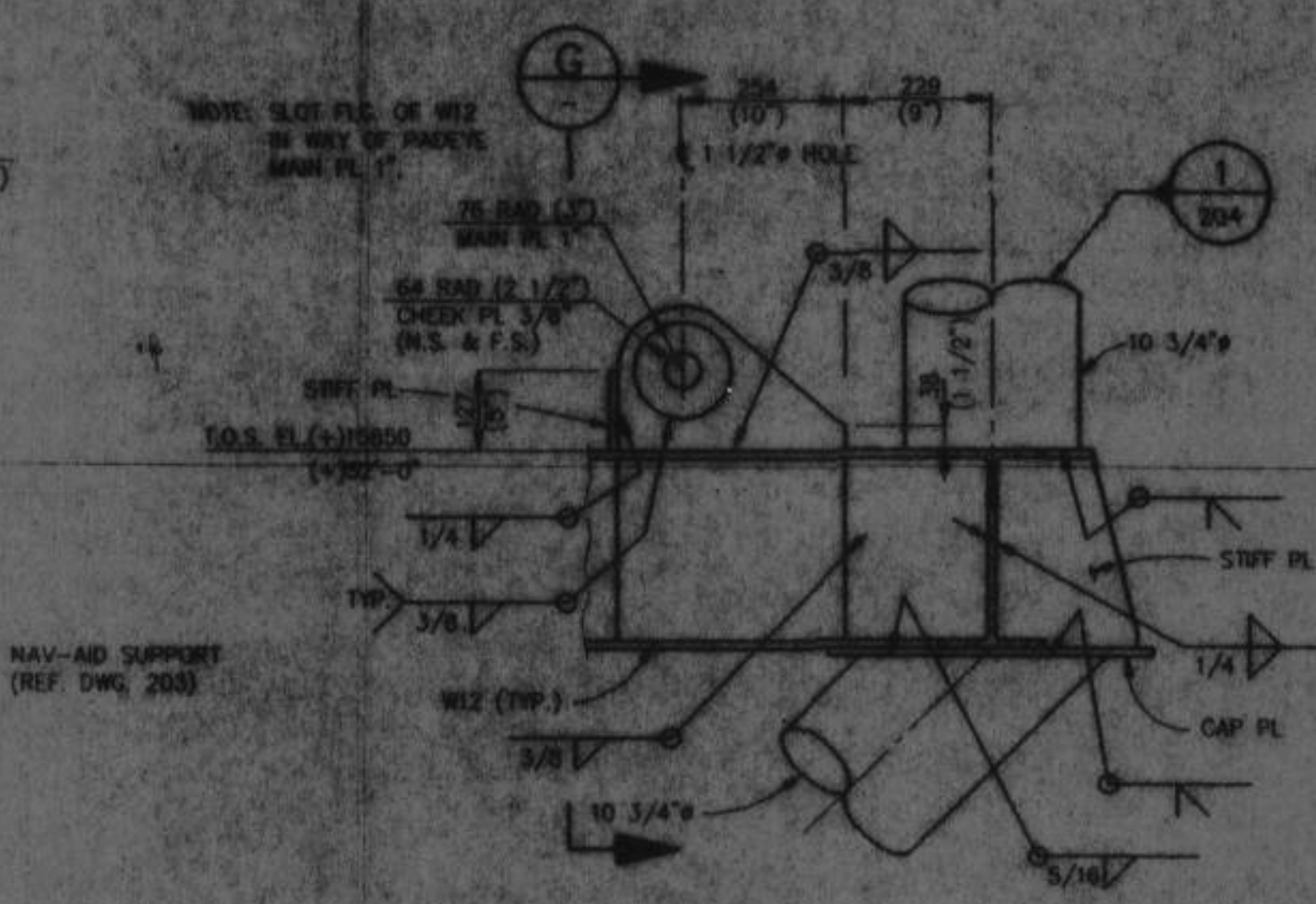
DETAIL 1
 SCALE: 1:10



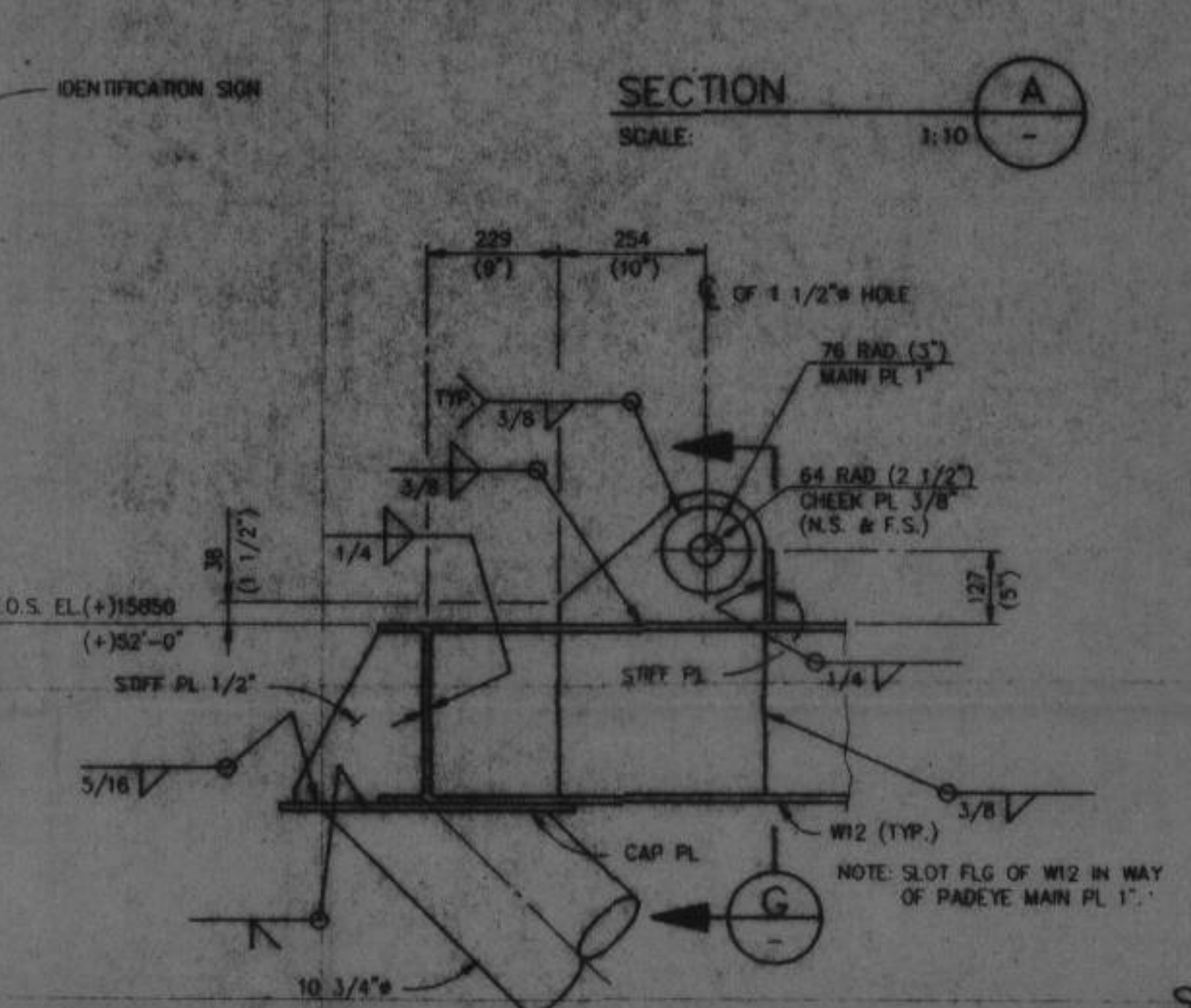
DETAIL 2
 SCALE: 1:10



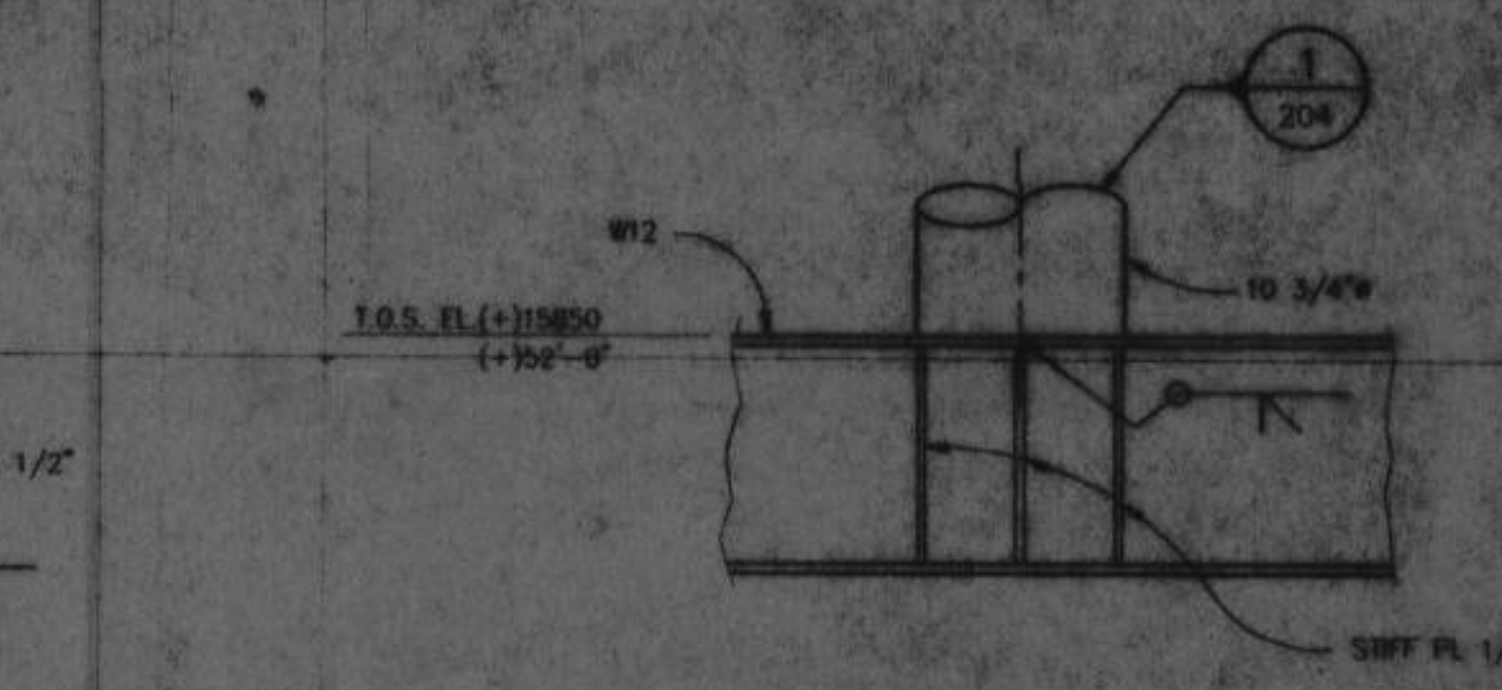
DETAIL 3
 SCALE: 1:10



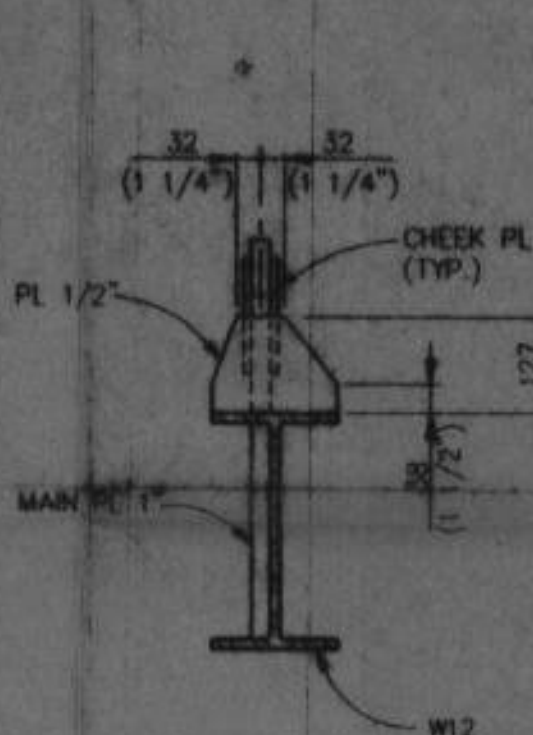
SECTION A
 SCALE: 1:10



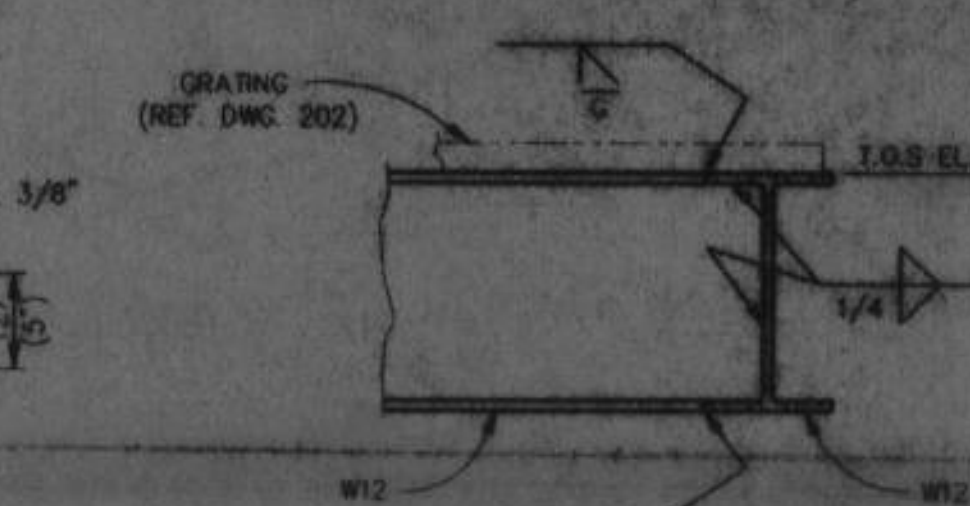
SECTION C
 SCALE: 1:10



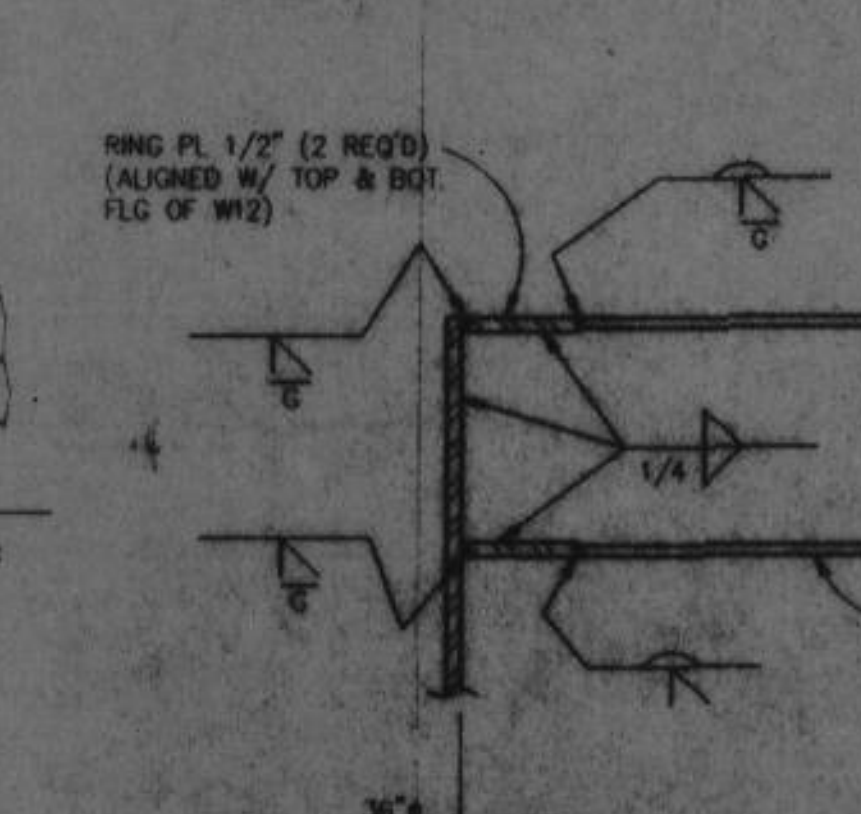
SECTION B
 SCALE: 1:10



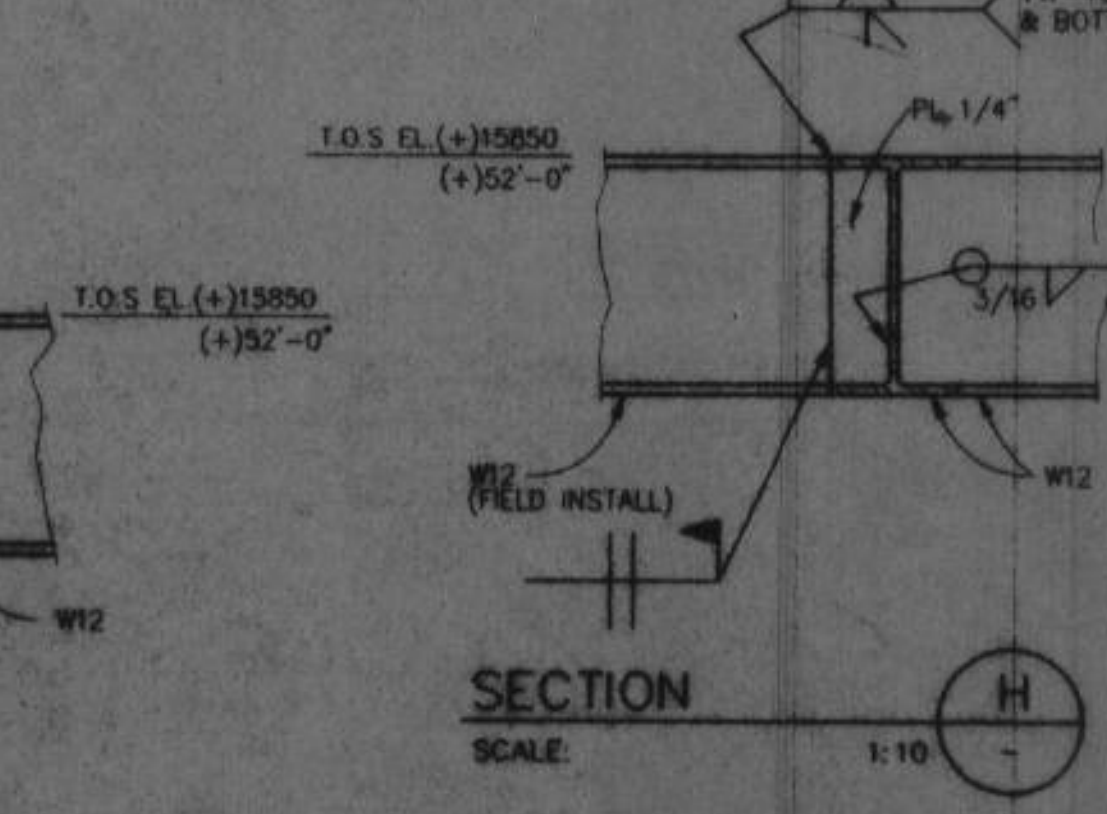
SECTION G
 SCALE: 1:10



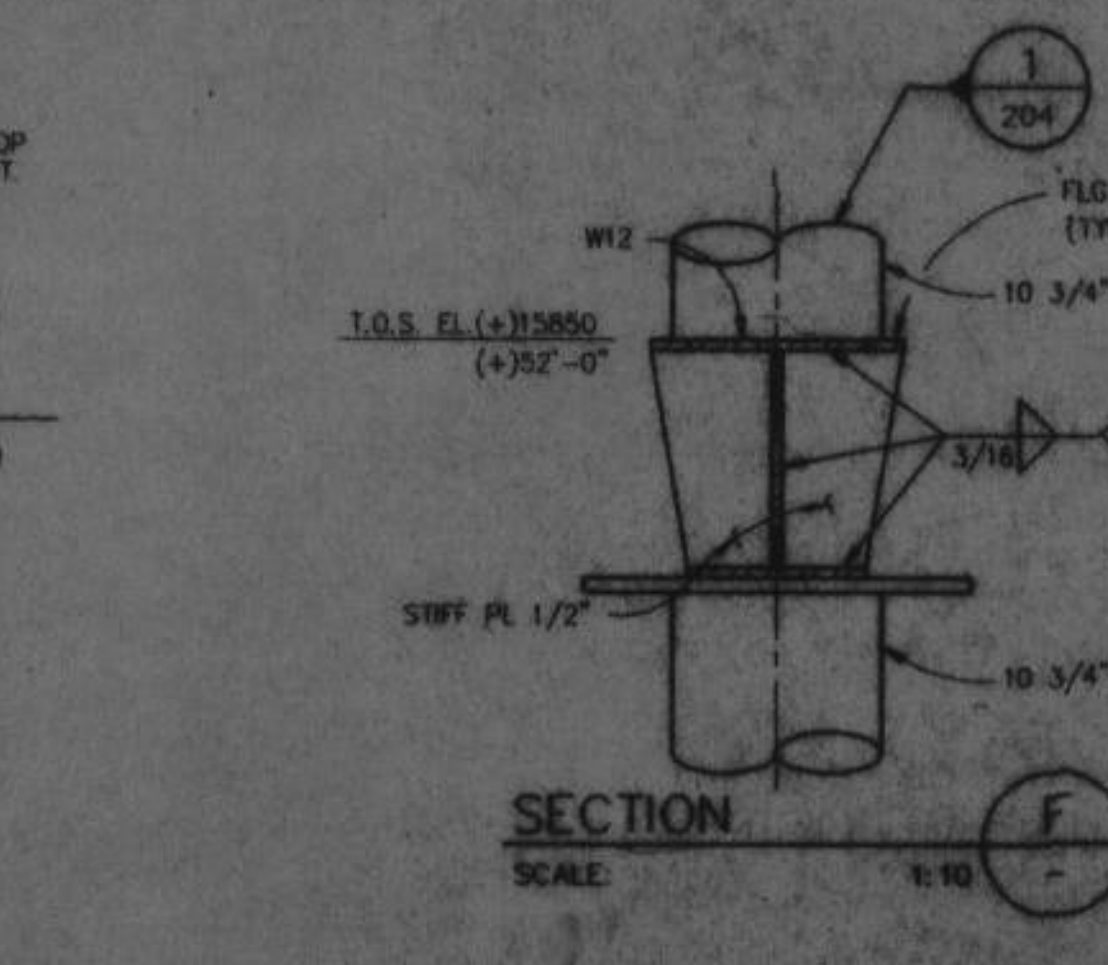
SECTION D
 SCALE: 1:10



SECTION E
 SCALE: 1:10



SECTION H
 SCALE: 1:10



SECTION F
 SCALE: 1:10

NOTES:
 1. FOR GENERAL NOTES SEE DWG. 101
 2. ALL MEMBER SIZES TO BE W200 UNLESS OTHERWISE NOTED
 3. Hatched area indicates field installed member

NO.	BY	REVISION	DATE	CHK'D	APP'D	NO.	BY	REVISION	DATE	CHK'D	APP'D



		Atlantia Corporation		PEMEX BAY OF CAMPECHE BALAM - 1	
SCALE	AS NOTED	DATE	12/91	MODULAR SEAHORSE SH-7	
DRAWN BY	E. SMITH JR.	DATE	12/91	1 WELL - 50 M WATER DEPTH	
CHECKED BY	[Signature]	DATE	12/91	MAIN DECK	
APPROVED BY	[Signature]	DATE	12/91	FRAMING AND DETAILS	
PROJECT NO.	91129	DRAWING NO.	201	REVISION	0